

Cliffside Apartments at 2380 Kingston Road

- A boutique collection of 1, 2 and 3 bedroom apartments from \$1700/mo
 - 2 minute walk to grocery, banks, drugstores, restaurants
 - 13 minute walk to Scarborough Go with a direct highspeed connection to Union Station
 - TTC 12A, 12B, 12C, 12D and 302 buses at your front door
 - Shared electric vehicle available to residents
 - Eliminate the need for car ownership in a building designed to connect you to all the essentials
- In-suite communication system to connect residents with offsite family members
 - Grade level bike and cart storage to make shopping easier
 - State-of-the-art HVAC for each apartment
 - Spacious indoor exercise/common room, private outdoor garden
 - Secure ground floor parcel delivery with in-suite notification system
 - Self-monitored security system

CLIFFSIDE VILLAGE

A unique walkable neighbourhood where residents enjoy the freedom that comes when everything you need is close by. Stroll with your cart to Loblaws No Frills, Scotiabank, Shoppers Drug Mart, Rexall and when you come back, enjoy your own dedicated cart locker at grade. Spend time one of dozens of local merchants including some of our favorites like Cliffside Books, Green & Frugal and Cliffside Meats. Enjoy coffee at Starbucks or Tim Hortons.

Enjoy the spectacular gardens and magnificent lake views at Rosetta McClain Gardens. Marvel at the majestic Bluffs from Scarborough Bluffs Park and walk or bike along kilometers of paths and trails that connect you to your favorite destinations in the area.

URBAN PROFESSIONALS - avoid the need to own a car Cliffside Apartments, where everything you need is steps away.

SENIORS – enjoy an active, independent lifestyle where family can stay connected through our secure, in-suite communication system and where help with cleaning or cooking is available on site.

YOUNG FAMILIES – benefit from a range of schooling options including Catholic, TDSB and private options.

RESERVE TODAY TO HOLD YOUR SPOT AT THIS
EXCITING BOUTIQUE RENTAL BUILDING THAT
CONNECTS YOU TO ALL THE ESSENTIALS.

BROUGHT TO YOU BY CLIFFSIDE HOMES



1 BEDROOM - SUITE 302 - 545 SF

SUITE FEATURES:

- 1 Bedroom
- Fridge, Dishwasher
Stove with range hood/microwave
- Stacked washer/dryer
- Double kitchen sink
- Walk in Shower
- Quartz countertops

COMMON / BUILDING FEATURES:

- 1.5G download/940M upload data service to every apartment.
- In-suite 10" touch enabled digital wall pad and mobile app for resident's smart phone for video connection to secure lobby entrance, HVAC control, keyless digital door lock, parcel delivery notification, in-suite flood detection, amenity room reservations, EV charge control and more. Family Care provides active monitoring while respecting your privacy, sending critical event notifications to your family members or friends, and real-time local response in case of emergencies.
- Indoor exercise and leisure room, outdoor common garden, lockers for bikes/other, elegant lobby, video security system, lobby parcel delivery system, parking and EV charging available at market rates.



RESERVE TODAY TO HOLD YOUR SPOT AT THIS
EXCITING BOUTIQUE RENTAL BUILDING THAT
CONNECTS YOU TO ALL THE ESSENTIALS.

BROUGHT TO YOU BY CLIFFSIDE HOMES



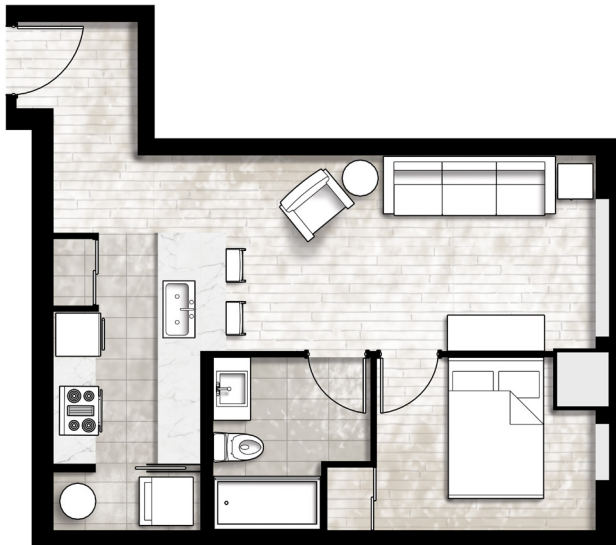
1 BEDROOM - SUITE 306 - 528 SF

SUITE FEATURES:

- 1 Bedroom
- Fridge, Dishwasher
Stove with range hood/microwave
- Stacked washer/dryer
- Double kitchen sink
- Walk in Shower
- Quartz countertops

COMMON / BUILDING FEATURES:

- 1.5G download/940M upload data service to every apartment.
- In-suite 10" touch enabled digital wall pad and mobile app for resident's smart phone for video connection to secure lobby entrance, HVAC control, keyless digital door lock, parcel delivery notification, in-suite flood detection, amenity room reservations, EV charge control and more. Family Care provides active monitoring while respecting your privacy, sending critical event notifications to your family members or friends, and real-time local response in case of emergencies.
- Indoor exercise and leisure room, outdoor common garden, lockers for bikes/other, elegant lobby, video security system, lobby parcel delivery system, parking and EV charging available at market rates.



RESERVE TODAY TO HOLD YOUR SPOT AT THIS
EXCITING BOUTIQUE RENTAL BUILDING THAT
CONNECTS YOU TO ALL THE ESSENTIALS.

BROUGHT TO YOU BY CLIFFSIDE HOMES



1 BEDROOM - SUITE 307 - 539 SF

SUITE FEATURES:

- 1 Bedroom
- Fridge, Dishwasher
Stove with range hood/microwave
- Stacked washer/dryer
- Double kitchen sink
- Walk in Shower
- Quartz countertops

COMMON / BUILDING FEATURES:

- 1.5G download/940M upload data service to every apartment.
- In-suite 10" touch enabled digital wall pad and mobile app for resident's smart phone for video connection to secure lobby entrance, HVAC control, keyless digital door lock, parcel delivery notification, in-suite flood detection, amenity room reservations, EV charge control and more. Family Care provides active monitoring while respecting your privacy, sending critical event notifications to your family members or friends, and real-time local response in case of emergencies.
- Indoor exercise and leisure room, outdoor common garden, lockers for bikes/other, elegant lobby, video security system, lobby parcel delivery system, parking and EV charging available at market rates.



RESERVE TODAY TO HOLD YOUR SPOT AT THIS
EXCITING BOUTIQUE RENTAL BUILDING THAT
CONNECTS YOU TO ALL THE ESSENTIALS.

BROUGHT TO YOU BY CLIFFSIDE HOMES



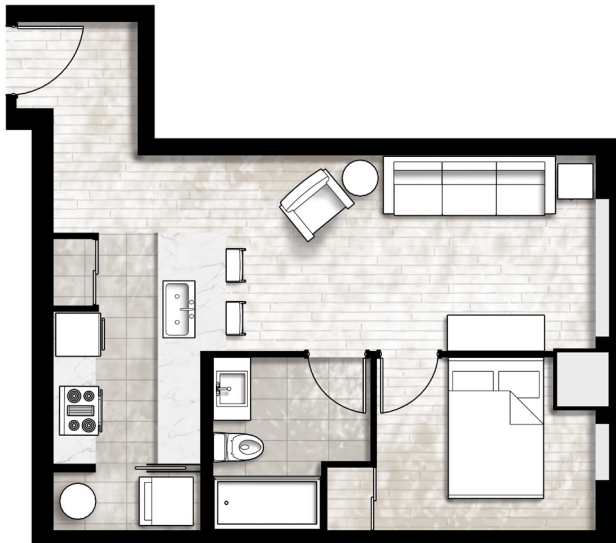
1 BEDROOM - SUITE 406 - 528 SF

SUITE FEATURES:

- 1 Bedroom
- Fridge, Dishwasher
Stove with range hood/microwave
- Stacked washer/dryer
- Single kitchen sink
- Walk in Shower
- Quartz countertops

COMMON / BUILDING FEATURES:

- 1.5G download/940M upload data service to every apartment.
- In-suite 10" touch enabled digital wall pad and mobile app for resident's smart phone for video connection to secure lobby entrance, HVAC control, keyless digital door lock, parcel delivery notification, in-suite flood detection, amenity room reservations, EV charge control and more. Family Care provides active monitoring while respecting your privacy, sending critical event notifications to your family members or friends, and real-time local response in case of emergencies.
- Indoor exercise and leisure room, outdoor common garden, lockers for bikes/other, elegant lobby, video security system, lobby parcel delivery system, parking and EV charging available at market rates.



RESERVE TODAY TO HOLD YOUR SPOT AT THIS
EXCITING BOUTIQUE RENTAL BUILDING THAT
CONNECTS YOU TO ALL THE ESSENTIALS.

BROUGHT TO YOU BY CLIFFSIDE HOMES



1 BEDROOM - SUITE 407 - 539 SF

SUITE FEATURES:

- 1 Bedroom
- Fridge, Dishwasher
Stove with range hood/microwave
- Stacked washer/dryer
- Double kitchen sink
- Walk in Shower
- Quartz countertops

COMMON / BUILDING FEATURES:

- 1.5G download/940M upload data service to every apartment.
- In-suite 10" touch enabled digital wall pad and mobile app for resident's smart phone for video connection to secure lobby entrance, HVAC control, keyless digital door lock, parcel delivery notification, in-suite flood detection, amenity room reservations, EV charge control and more. Family Care provides active monitoring while respecting your privacy, sending critical event notifications to your family members or friends, and real-time local response in case of emergencies.
- Indoor exercise and leisure room, outdoor common garden, lockers for bikes/other, elegant lobby, video security system, lobby parcel delivery system, parking and EV charging available at market rates.



RESERVE TODAY TO HOLD YOUR SPOT AT THIS
EXCITING BOUTIQUE RENTAL BUILDING THAT
CONNECTS YOU TO ALL THE ESSENTIALS.

BROUGHT TO YOU BY CLIFFSIDE HOMES



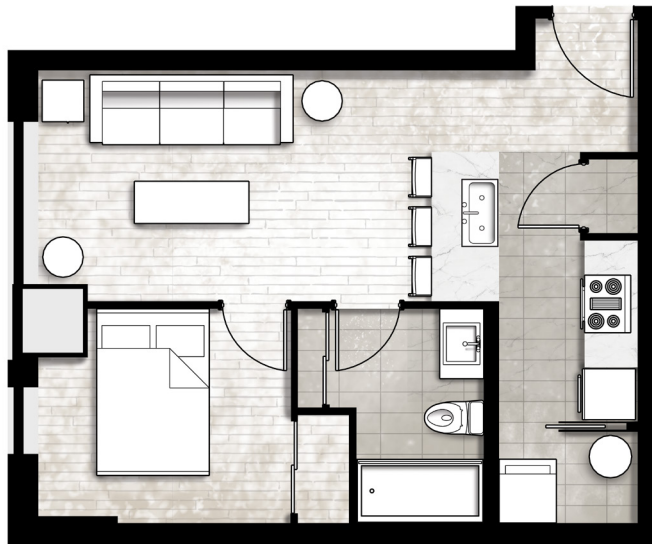
1 BEDROOM - SUITE 501 - 492 SF

SUITE FEATURES:

- 1 Bedroom
- Fridge, Dishwasher
Stove with range hood/microwave
- Stacked washer/dryer
- Double kitchen sink
- Walk in Shower
- Quartz countertops

COMMON / BUILDING FEATURES:

- 1.5G download/940M upload data service to every apartment.
- In-suite 10" touch enabled digital wall pad and mobile app for resident's smart phone for video connection to secure lobby entrance, HVAC control, keyless digital door lock, parcel delivery notification, in-suite flood detection, amenity room reservations, EV charge control and more. Family Care provides active monitoring while respecting your privacy, sending critical event notifications to your family members or friends, and real-time local response in case of emergencies.
- Indoor exercise and leisure room, outdoor common garden, lockers for bikes/other, elegant lobby, video security system, lobby parcel delivery system, parking and EV charging available at market rates.



RESERVE TODAY TO HOLD YOUR SPOT AT THIS
EXCITING BOUTIQUE RENTAL BUILDING THAT
CONNECTS YOU TO ALL THE ESSENTIALS.

BROUGHT TO YOU BY CLIFFSIDE HOMES



1 BEDROOM - SUITE 502 - 433 SF

SUITE FEATURES:

- 1 Bedroom
- Fridge, Dishwasher
Stove with range hood/microwave
- Stacked washer/dryer
- Single kitchen sink
- Walk in Shower
- Quartz countertops

COMMON / BUILDING FEATURES:

- 1.5G download/940M upload data service to every apartment.
- In-suite 10" touch enabled digital wall pad and mobile app for resident's smart phone for video connection to secure lobby entrance, HVAC control, keyless digital door lock, parcel delivery notification, in-suite flood detection, amenity room reservations, EV charge control and more. Family Care provides active monitoring while respecting your privacy, sending critical event notifications to your family members or friends, and real-time local response in case of emergencies.
- Indoor exercise and leisure room, outdoor common garden, lockers for bikes/other, elegant lobby, video security system, lobby parcel delivery system, parking and EV charging available at market rates.



RESERVE TODAY TO HOLD YOUR SPOT AT THIS
EXCITING BOUTIQUE RENTAL BUILDING THAT
CONNECTS YOU TO ALL THE ESSENTIALS.

BROUGHT TO YOU BY CLIFFSIDE HOMES



1 BEDROOM - SUITE 503 - 464 SF

SUITE FEATURES:

- 1 Bedroom
- Fridge, Dishwasher
Stove with range hood/microwave
- Stacked washer/dryer
- Single kitchen sink
- Walk in Shower
- Quartz countertops

COMMON / BUILDING FEATURES:

- 1.5G download/940M upload data service to every apartment.
- In-suite 10" touch enabled digital wall pad and mobile app for resident's smart phone for video connection to secure lobby entrance, HVAC control, keyless digital door lock, parcel delivery notification, in-suite flood detection, amenity room reservations, EV charge control and more. Family Care provides active monitoring while respecting your privacy, sending critical event notifications to your family members or friends, and real-time local response in case of emergencies.
- Indoor exercise and leisure room, outdoor common garden, lockers for bikes/other, elegant lobby, video security system, lobby parcel delivery system, parking and EV charging available at market rates.



RESERVE TODAY TO HOLD YOUR SPOT AT THIS
EXCITING BOUTIQUE RENTAL BUILDING THAT
CONNECTS YOU TO ALL THE ESSENTIALS.

BROUGHT TO YOU BY CLIFFSIDE HOMES



1 BEDROOM - SUITE 506 - 528 SF

SUITE FEATURES:

- 1 Bedroom
- Fridge, Dishwasher
Stove with range hood/microwave
- Stacked washer/dryer
- Single kitchen sink
- Walk in Shower
- Quartz countertops

COMMON / BUILDING FEATURES:

- 1.5G download/940M upload data service to every apartment.
- In-suite 10" touch enabled digital wall pad and mobile app for resident's smart phone for video connection to secure lobby entrance, HVAC control, keyless digital door lock, parcel delivery notification, in-suite flood detection, amenity room reservations, EV charge control and more. Family Care provides active monitoring while respecting your privacy, sending critical event notifications to your family members or friends, and real-time local response in case of emergencies.
- Indoor exercise and leisure room, outdoor common garden, lockers for bikes/other, elegant lobby, video security system, lobby parcel delivery system, parking and EV charging available at market rates.



RESERVE TODAY TO HOLD YOUR SPOT AT THIS
EXCITING BOUTIQUE RENTAL BUILDING THAT
CONNECTS YOU TO ALL THE ESSENTIALS.

BROUGHT TO YOU BY CLIFFSIDE HOMES



1 BEDROOM - SUITE 507 - 539 SF

SUITE FEATURES:

- 1 Bedroom
- Fridge, Dishwasher
Stove with range hood/microwave
- Stacked washer/dryer
- Double kitchen sink
- Walk in Shower
- Quartz countertops

COMMON / BUILDING FEATURES:

- 1.5G download/940M upload data service to every apartment.
- In-suite 10" touch enabled digital wall pad and mobile app for resident's smart phone for video connection to secure lobby entrance, HVAC control, keyless digital door lock, parcel delivery notification, in-suite flood detection, amenity room reservations, EV charge control and more. Family Care provides active monitoring while respecting your privacy, sending critical event notifications to your family members or friends, and real-time local response in case of emergencies.
- Indoor exercise and leisure room, outdoor common garden, lockers for bikes/other, elegant lobby, video security system, lobby parcel delivery system, parking and EV charging available at market rates.



RESERVE TODAY TO HOLD YOUR SPOT AT THIS
EXCITING BOUTIQUE RENTAL BUILDING THAT
CONNECTS YOU TO ALL THE ESSENTIALS.

BROUGHT TO YOU BY CLIFFSIDE HOMES



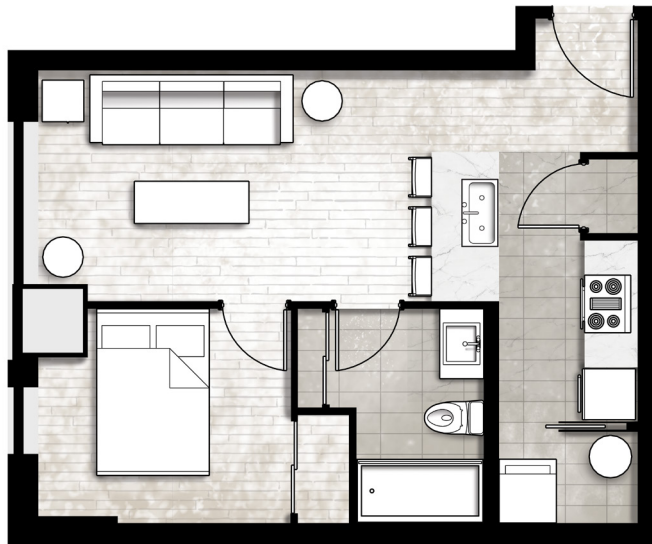
1 BEDROOM - SUITE 601 - 492 SF

SUITE FEATURES:

- 1 Bedroom
- Fridge, Dishwasher
Stove with range hood/microwave
- Stacked washer/dryer
- Single kitchen sink
- Walk in Shower
- Quartz countertops

COMMON / BUILDING FEATURES:

- 1.5G download/940M upload data service to every apartment.
- In-suite 10" touch enabled digital wall pad and mobile app for resident's smart phone for video connection to secure lobby entrance, HVAC control, keyless digital door lock, parcel delivery notification, in-suite flood detection, amenity room reservations, EV charge control and more. Family Care provides active monitoring while respecting your privacy, sending critical event notifications to your family members or friends, and real-time local response in case of emergencies.
- Indoor exercise and leisure room, outdoor common garden, lockers for bikes/other, elegant lobby, video security system, lobby parcel delivery system, parking and EV charging available at market rates.



RESERVE TODAY TO HOLD YOUR SPOT AT THIS
EXCITING BOUTIQUE RENTAL BUILDING THAT
CONNECTS YOU TO ALL THE ESSENTIALS.

BROUGHT TO YOU BY CLIFFSIDE HOMES



1 BEDROOM - SUITE 602 - 433 SF

SUITE FEATURES:

- 1 Bedroom
- Fridge, Dishwasher
Stove with range hood/microwave
- Stacked washer/dryer
- Single kitchen sink
- Walk in Shower
- Quartz countertops

COMMON / BUILDING FEATURES:

- 1.5G download/940M upload data service to every apartment.
- In-suite 10" touch enabled digital wall pad and mobile app for resident's smart phone for video connection to secure lobby entrance, HVAC control, keyless digital door lock, parcel delivery notification, in-suite flood detection, amenity room reservations, EV charge control and more. Family Care provides active monitoring while respecting your privacy, sending critical event notifications to your family members or friends, and real-time local response in case of emergencies.
- Indoor exercise and leisure room, outdoor common garden, lockers for bikes/other, elegant lobby, video security system, lobby parcel delivery system, parking and EV charging available at market rates.



RESERVE TODAY TO HOLD YOUR SPOT AT THIS
EXCITING BOUTIQUE RENTAL BUILDING THAT
CONNECTS YOU TO ALL THE ESSENTIALS.

BROUGHT TO YOU BY CLIFFSIDE HOMES



1 BEDROOM - SUITE 603 - 454 SF

SUITE FEATURES:

- 1 Bedroom
- Fridge, Dishwasher
Stove with range hood/microwave
- Stacked washer/dryer
- Single kitchen sink
- Walk in Shower
- Quartz countertops

COMMON / BUILDING FEATURES:

- 1.5G download/940M upload data service to every apartment.
- In-suite 10" touch enabled digital wall pad and mobile app for resident's smart phone for video connection to secure lobby entrance, HVAC control, keyless digital door lock, parcel delivery notification, in-suite flood detection, amenity room reservations, EV charge control and more. Family Care provides active monitoring while respecting your privacy, sending critical event notifications to your family members or friends, and real-time local response in case of emergencies.
- Indoor exercise and leisure room, outdoor common garden, lockers for bikes/other, elegant lobby, video security system, lobby parcel delivery system, parking and EV charging available at market rates.



RESERVE TODAY TO HOLD YOUR SPOT AT THIS
EXCITING BOUTIQUE RENTAL BUILDING THAT
CONNECTS YOU TO ALL THE ESSENTIALS.

BROUGHT TO YOU BY CLIFFSIDE HOMES



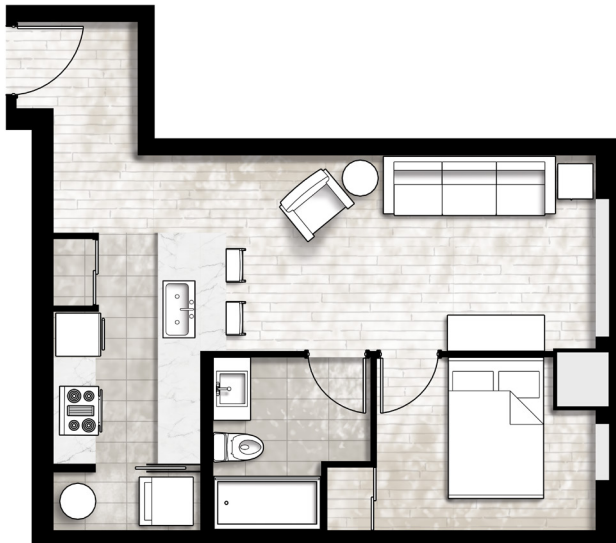
1 BEDROOM - SUITE 606 - 528 SF

SUITE FEATURES:

- 1 Bedroom
- Fridge, Dishwasher
Stove with range hood/microwave
- Stacked washer/dryer
- Single kitchen sink
- Walk in Shower
- Quartz countertops

COMMON / BUILDING FEATURES:

- 1.5G download/940M upload data service to every apartment.
- In-suite 10" touch enabled digital wall pad and mobile app for resident's smart phone for video connection to secure lobby entrance, HVAC control, keyless digital door lock, parcel delivery notification, in-suite flood detection, amenity room reservations, EV charge control and more. Family Care provides active monitoring while respecting your privacy, sending critical event notifications to your family members or friends, and real-time local response in case of emergencies.
- Indoor exercise and leisure room, outdoor common garden, lockers for bikes/other, elegant lobby, video security system, lobby parcel delivery system, parking and EV charging available at market rates.



RESERVE TODAY TO HOLD YOUR SPOT AT THIS
EXCITING BOUTIQUE RENTAL BUILDING THAT
CONNECTS YOU TO ALL THE ESSENTIALS.

BROUGHT TO YOU BY CLIFFSIDE HOMES



1 BEDROOM - SUITE 607 - 539 SF

SUITE FEATURES:

- 1 Bedroom
- Fridge, Dishwasher
Stove with range hood/microwave
- Stacked washer/dryer
- Double kitchen sink
- Walk in Shower
- Quartz countertops

COMMON / BUILDING FEATURES:

- 1.5G download/940M upload data service to every apartment.
- In-suite 10" touch enabled digital wall pad and mobile app for resident's smart phone for video connection to secure lobby entrance, HVAC control, keyless digital door lock, parcel delivery notification, in-suite flood detection, amenity room reservations, EV charge control and more. Family Care provides active monitoring while respecting your privacy, sending critical event notifications to your family members or friends, and real-time local response in case of emergencies.
- Indoor exercise and leisure room, outdoor common garden, lockers for bikes/other, elegant lobby, video security system, lobby parcel delivery system, parking and EV charging available at market rates.





CLIFFSIDE
HOMES

WWW.CLIFFSIDEHOMES.CA

WWW.CLIFFSIDEAPARTMENTS.CA